

# BOARD OF DIRECTORS

View more detailed biographies  
at [LCRF.org/board](https://www.lcrf.org/board).  
Updated August 2025

## EXECUTIVE COMMITTEE

### BOARD CHAIR



**Colleen Connor Ziegler**  
Patient advocate

### BOARD VICE CHAIR



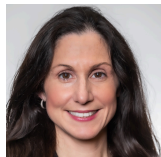
**Jill Morningstar**  
Advocate

### TREASURER



**Aaron M. Tighe**  
Global Head of Emerging Markets  
Institutional Sales, Santander  
Corporate & Investment Banking;  
Co-Chair, Guggenheim Museum  
Photography Acquisition Committee

### CHAIR, SCIENTIFIC ADVISORY BOARD



**Kathryn O'Donnell, PhD**  
Associate Professor,  
Dept. of Molecular Biology,  
UT Southwestern  
Medical Center

### SECRETARY



**Bruce Dunbar**  
Communications  
Consultant,  
Coppertop Media

### CHAIR, CORPORATE DEVELOPMENT COMMITTEE



**Matt Cipriani**  
3C/Cipriani Construction  
Consulting

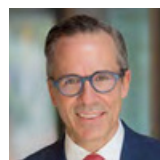
## BOARD MEMBERS



**Raymond E. Chalmé**  
CEO & Partner, Broad  
Street Development LLC



**Scott Morris**  
Creative Artists  
Agency



**Brendon M. Stiles, MD**  
Chief, Division of Thoracic Surgery  
and Surgical Oncology;  
Associate Director, Surgical Services,  
Montefiore-Einstein Cancer Center



**Peter M. Fry**  
Senior Managing Director,  
Head of Alternative Equities,  
SVB Leerink, LLC



**Tejal Patel**  
Vice President of  
Operations, Sinai  
Chicago



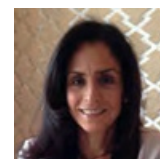
**Mary Ann Tighe**  
CEO, NY Tri-State  
Region, CBRE



**Jill Furman**  
Theater producer



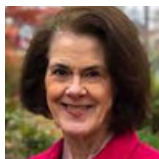
**Katerina Politi, PhD**  
Associate Professor of  
Pathology and Internal  
Medicine,  
Yale School of Medicine



**Rose Ann Weinstein**  
Fashion designer



**Reina Honts**  
Fashion industry executive



**Joan Schiller, MD**  
Adjunct Professor,  
Department of Medicine,  
University of Virginia